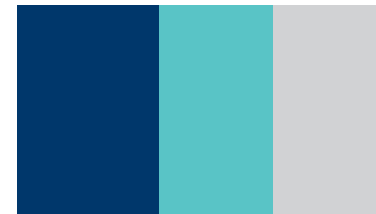




STEAM ROOM H141 INSTRUCTION



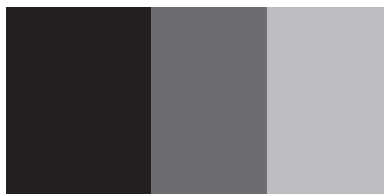


We appreciate your choosing of our shower products, and wish you a pleasant experience with our products and service. Please read Instruction carefully before installation.



## Catalogue

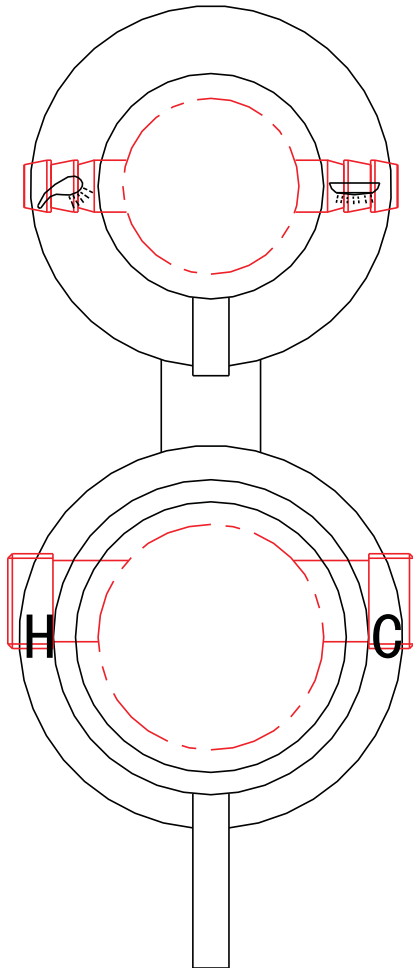
1)Check Appearance of Shower Enclosure	1
2)Picture of Parts	2
3)Scheme of Installation	3
4)Guidebook	6
5)Notice and Maintenance	13



## Notice and Maintenance

- 1) Clean the sliding track and adjust rollers regularly;
- 2) CLEANING- use only warm soapy water and damp cloth/sponge on a regular basis;  
Do not use abrasive scouring powders, chemicals or aerosol cleaners- these may result in damage to the surfaces, in particular, the plated component parts;
- 3) Do not put your hands between glass doors when sliding;
- 4) Do not climb shower enclosure;
- 5) Do not hang heavy articles on shower enclosure;

 valve

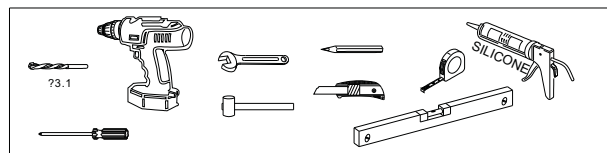
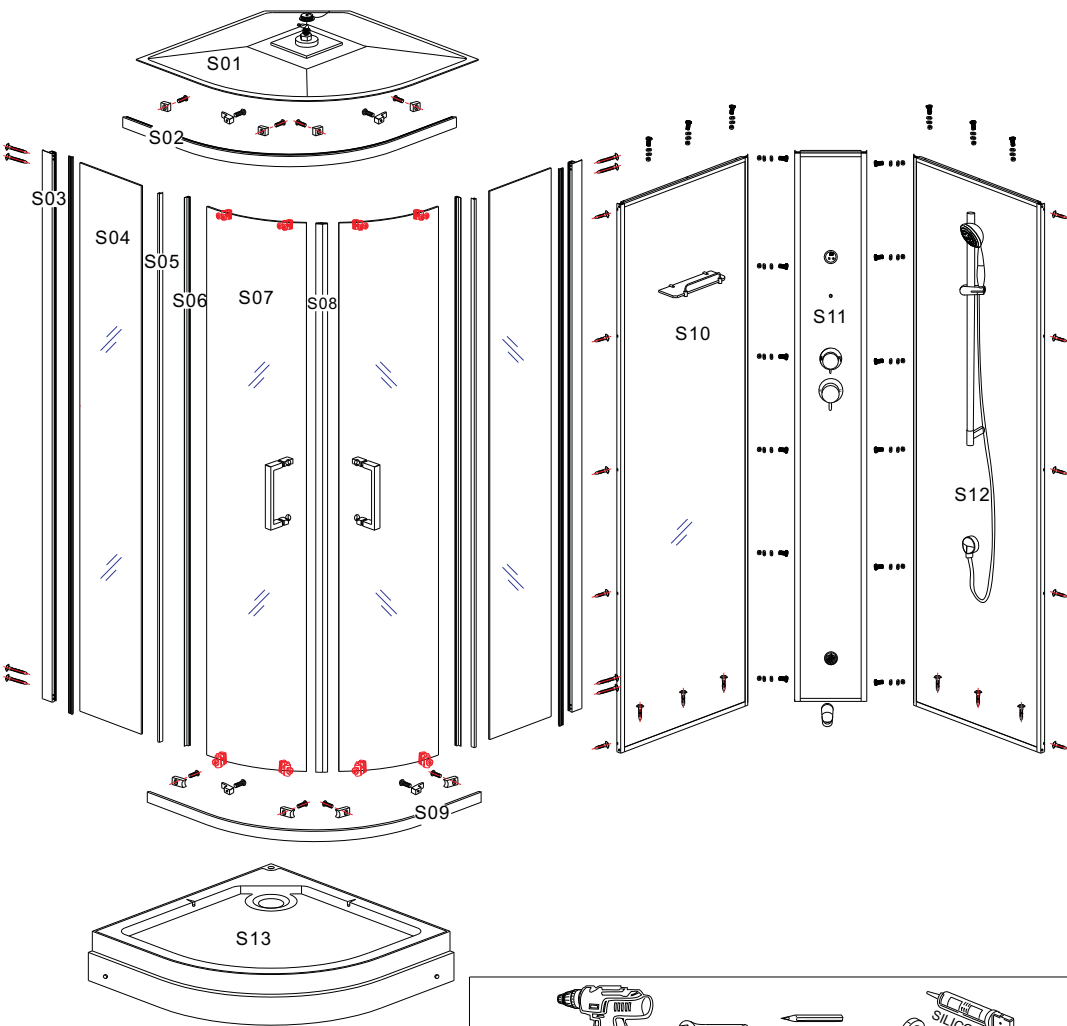


 Check Appearance of Steam Room

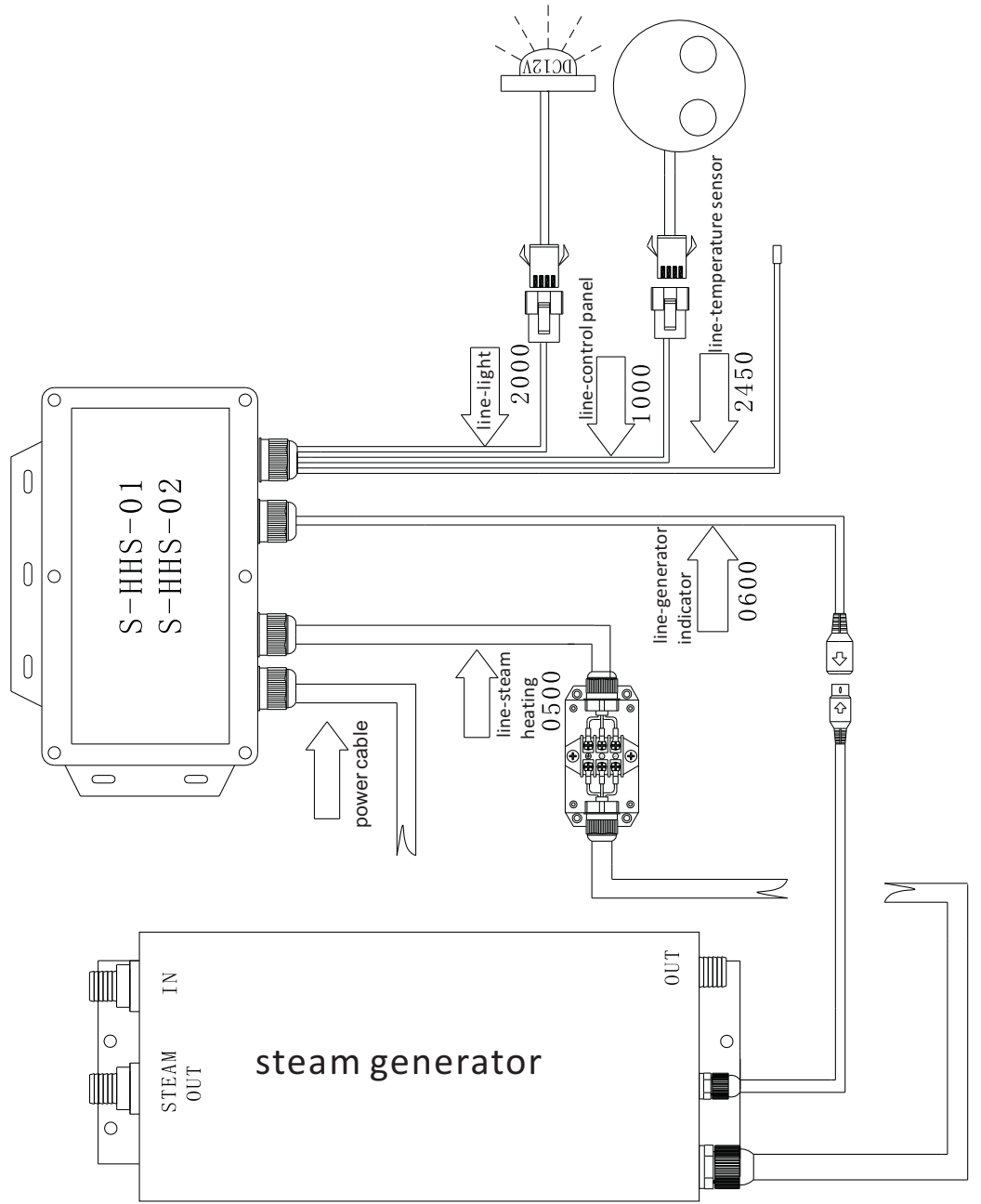
1) Any defects must be reported to seller before assembly / installation.

2) Claims for imperfections will only be accepted prior to assembly / installation.

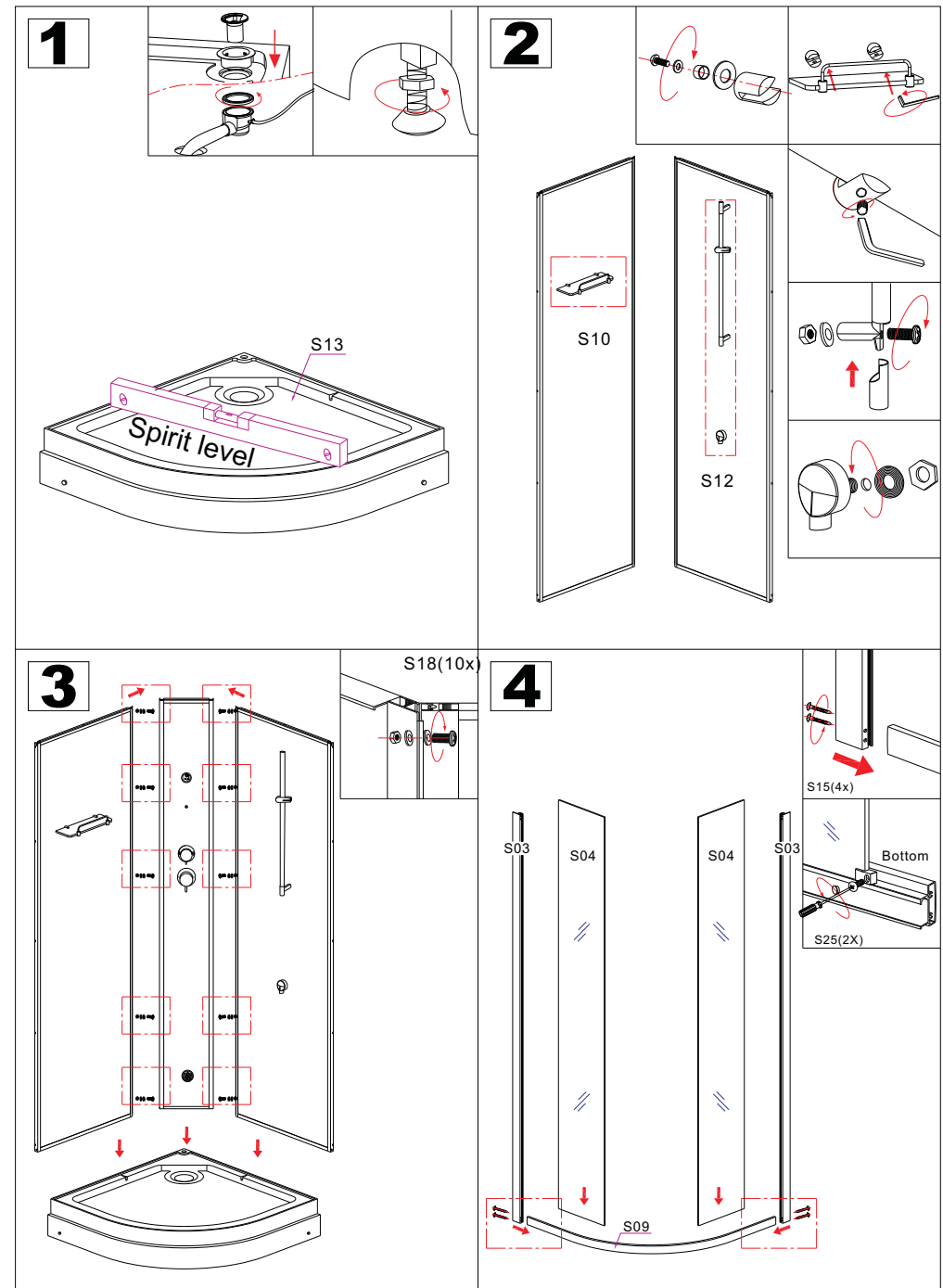


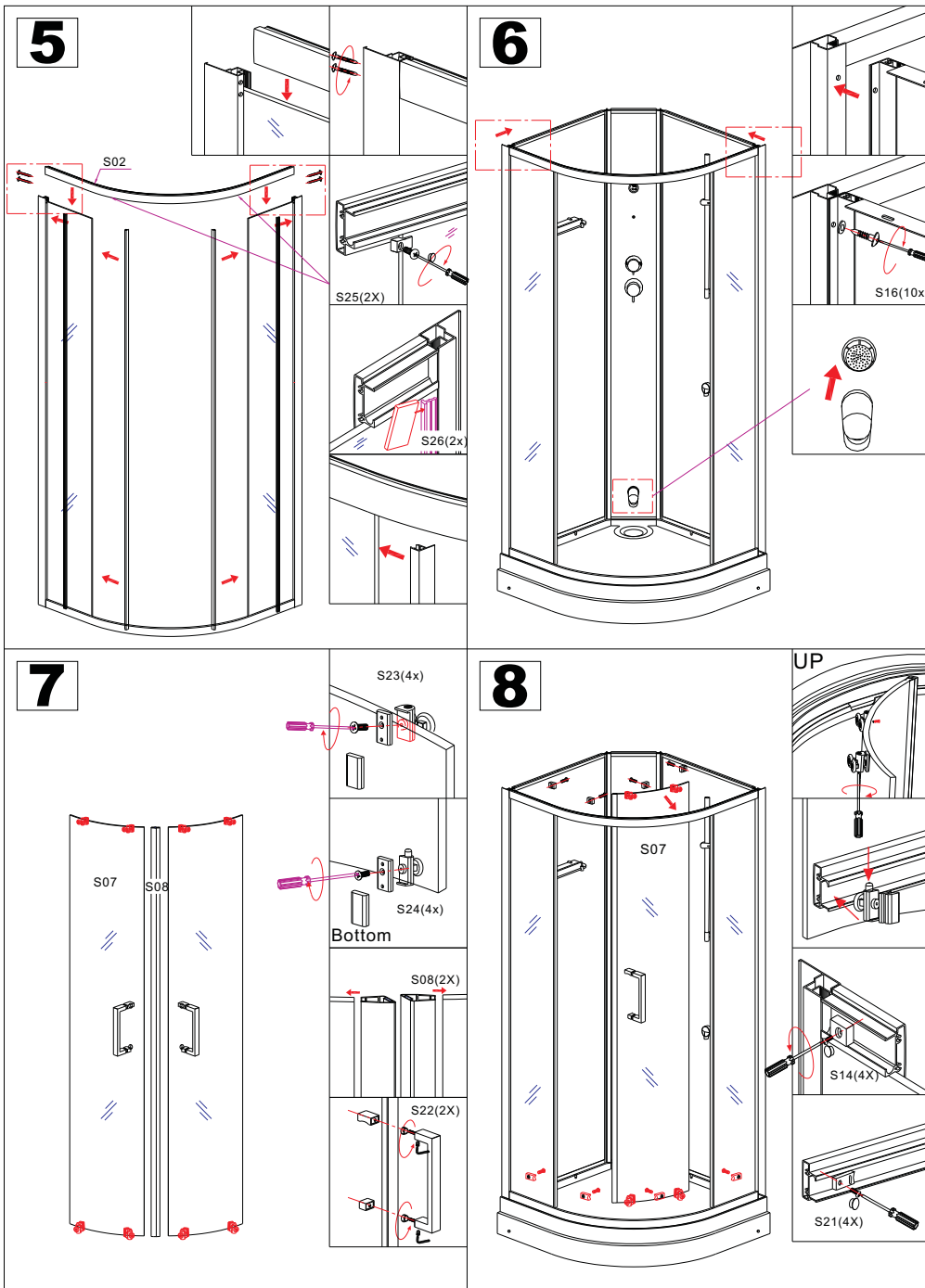


<p>S14</p> <p>4x 4x</p>	<p>S15</p> <p>8x</p>	<p>S16</p> <p>10x</p>	<p>S17</p> <p>4x</p>	<p>S18</p> <p>10x</p>	<p>S19</p> <p>6x</p>	<p>S20</p> <p>6x</p>
<p>S21</p> <p>4x 4x</p>	<p>S22</p> <p>2x</p>	<p>S23</p> <p>4x</p>	<p>S24</p> <p>4x</p>	<p>S25</p> <p>4x</p>	<p>S26</p> <p>2x</p>	<p>S27</p> <p>2x</p>



	3. The leak-protection switch is not good. ( Replace it )
Smoke comes from steam output, or bad smell	1. Inside the Steam Generator, the water level wire is in short circuit or there is water in the level sensor.( Debug the short circuit and dry the level sensor) 2. Steam Generator or Electric Box is broken. (Replace it)
Get an electric shock, but the leak-protection switch doesn't work.	The ground wire doesn't connect well. (Please make sure that the ground wire of the shower room connect the ground well)





qualified technician. If user disobey above operation regulation and cause any adverse consequence, our company won't take any responsibility.

## 六、Malfunction Analysis:

During the operation of this product, if any abnormal malfunctions happen, please ask qualified technician to refer following analysis to remove malfunctions.

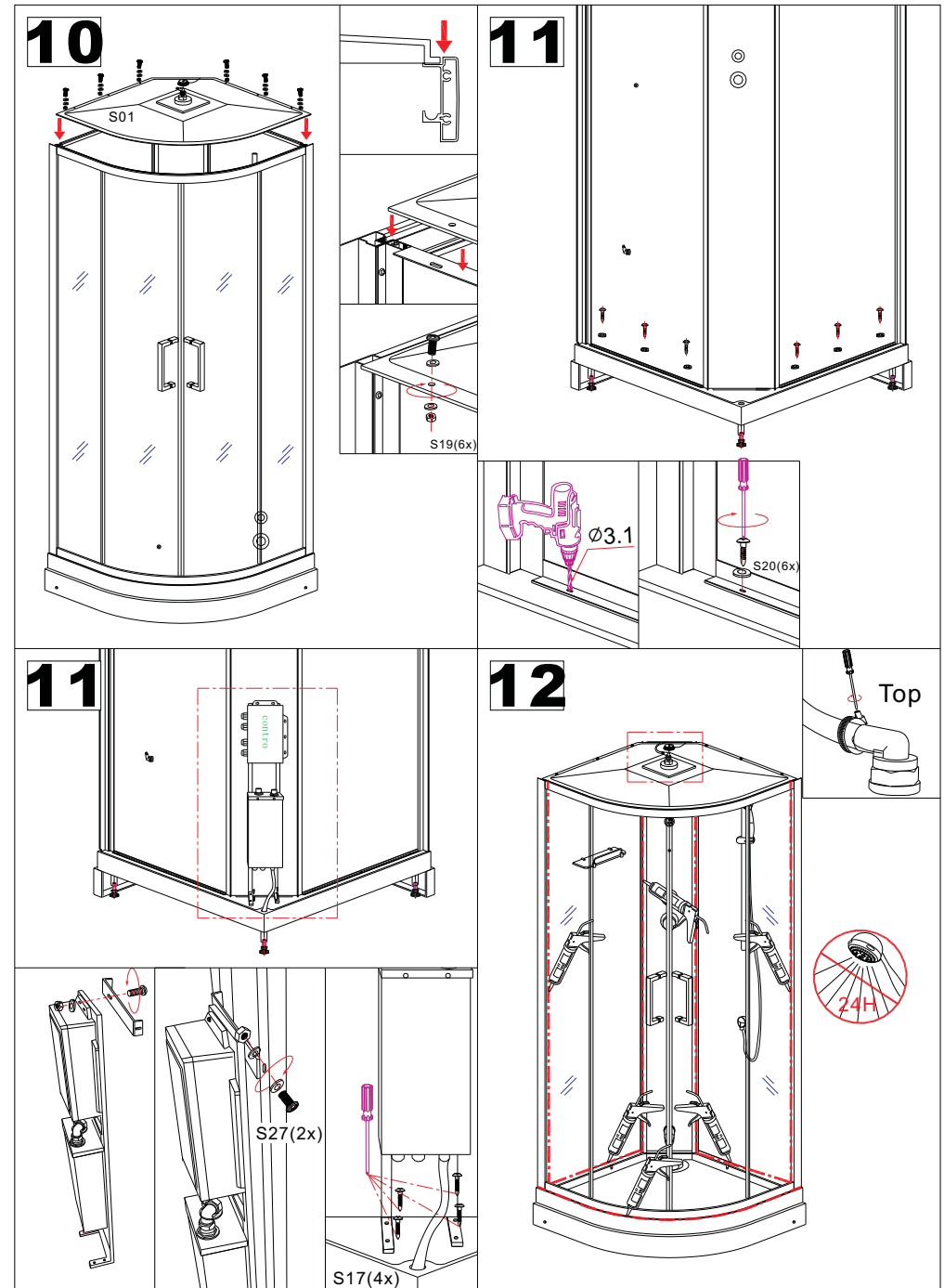
Malfunctions Type	Analysis (Solutions)
Can't turn on the system	<ol style="list-style-type: none"> <li>1. No por conntion (Connt por supply)</li> <li>2. Lk -prottion stch is off ( Plsturn it on)</li> <li>3. Pan doesn't connect properly. (Connect it well)</li> <li>4. Pan or Eltric Box is brok. (Rlacit)</li> </ol>
Light doesn't work	<p>The connector doesn't connect well(Connect it well)</p> <p>Thoutput of thlight is in op circuit(Tight it)</p> <p>Thoutput of thlight is in short circuit(Dug short circuit)</p> <p>Thlight is brok.( Rlacit)</p>
Stm gator sprays a lot of t, but th stm com out.	Normal occurrc
Wat inl is running thout stopping, spray a lot of t, but no stm com out.	<ol style="list-style-type: none"> <li>1. The t l ssor loos. (Tight it)</li> <li>2. Tht inl valvis brok. ( Rlacit)</li> <li>3. Stm Gator or Eltric Box is brok. (Rlacit)</li> </ol>
No stm com out from stm gator	<p>The Electric Heater inside the Steam Generator is broken. (Replace it)</p> <p>The signal wire of the water inlet valve inside the Steam Generator is off or in open circuit.(Connect it)</p> <p>The signal wire between the Electric Box and Steam Generator doesn't connect well. (Connect it)</p> <p>The wire of the heater between Electric Box and Steam Generator doesn't connect well. (Connect it )</p> <p>Anti-dry heating protection works. (Restore)</p> <p>6. The water inlet valve is broken ( Replace it)</p> <ol style="list-style-type: none"> <li>1. Steam Generator or Electric Box is broken. (Replace it)</li> </ol>
Leak-protection switch trip	<ol style="list-style-type: none"> <li>1. Leakage of the AC230V power supply. ( Bind it)</li> <li>2. Leakage of the heater inside the steam generator. ( Replace it )</li> </ol>

6. The installation of keyboard and electric box are attached in the appendix.

## 五、Cautions:

In order to prolong the lifetime of this product and ensure the safety of human being, please read these cautions carefully before using this product.

1. User must strictly follow our provided circuit drawing and parameter to install the load.
2. The earth wire of control box must be well connected on the circuit.
3. User must use at least 3x2.5mm<sup>2</sup> power supply which meets the nation standards (GB), the socket of power supply of the control box must be at least 20A, and fix it reliably.
4. User must add extra 20A or above national standard air switch or leakage switch, the leakage switch of control box is only used as complement.
5. Please check and ensure the pipe of water intake, steam pipe, power control box, power supply of electric box are in good condition, then turn on the power. (Attention: Ensure that water provided)
6. The inner hole of the steam pipe should be at least 15mm, strictly forbid to install valve on steam pipe.
7. Please don't connect electric equipment from other supplier to our steam generator. Forbid to disassemble, refit our inside fixed wire connection.
8. The quality of water used for steam generator should meet the water standard.
9. When install the pipe of steam generator, we suggest that add the filter onto the water intake to prolong the lifetime.
10. In hard water area, please make descaling rinsing regularly for the steam generator, especially for the probe of the water level sensor. Normally, check it every three months. Following descaling rinsing method is advised: Use 5-10g citric acid to dilute by 1.4L warm water, disassemble the pipe of steam output, and infuse the diluted citric acid into the input of steam generator, then connect the pipe and wait for 60minutes to start the system, after heating for 30minutes to stop and make completely discharge.
11. Make sure that all the wires are well connected, output can't be short circuit with each other.
12. After used this product, please cut off the power supply to avoid long time machine internal electrification and accelerate ageing.
13. The installation of this controller system must follow the instruction and be installed by



# ZQKZ-HHS-03(ZQMB-YXC-01) Introduction Manual

## 一、Keyboard Diagram:



## 二、Functions Introduction

### 2.1、Color-Changing Light ☀

After power on, press ☀ button to start the color-changing light, the corresponding indicator lights, at this time, all lights are on. Second press this button, the lights start color changing in the order of green – blue - red - red and green - half red and green - red and blue – red, green and blue. Third press this button to stop color changing. Press this button again to re-start the color-changing light, and that cycle repeats, Long press on this button to close this function, and the corresponding indicator goes out.

### 2.2、Sauna 🌊

After power on, press 🌊 button to start the sauna, the corresponding indicator lights. After 20 seconds drain, the water tank starts to feed water. After filled with enough water, the inlet valve is closed, and the electrical heater starts to heat up the inside water.

If the electrical heater continually working over 5 minutes without feeding water, the system compulsively feed water for 1 second.

The sauna will be auto closed after continually working for 1 hour.

After opening the sauna function, if the water temperature over 45°C, the electrical heater will be auto closed, if not, the electrical heater will auto start to work.

If the sauna has been working before powering off, the system will drains water for 3 minutes after power off 1 minute later.

## 三、Self-Alarm of Malfunctions:

Malfunctions as follows:

**Error 1 with water feeding:** After first feeding water surpass 2 minutes, if the water level doesn't reach to the standard level, alarm error “E1”, the system will continually feeding water.

**Error 2 with water feeding:** After second feeding water surpass 5 seconds, if the water level still doesn't reach to the standard level, the sauna sign flashes two times and the electrical heater stops, the system will continually feeding water.

**Error 3 with overheating protection:** After protect switch of electric heat breaks, the sauna sign flashes 3 times. The treating process as follows: stop electric heating and feeding water for 3 seconds---stop feeding water for 10 seconds ---drain water for 30 seconds-stop draining.

After finishing the above steps, please check the protect switch of electric heat if it is closed or not. If closed, please clear away the malfunction and go on the normal sauna working, if not, repeat above steps.

## 四、Technical Specification:

Working Conditions and Characteristics			
Related Voltage	AC230V	Rated Frequency	50/60Hz
Related current	<=13A	Rated Power	3000W
Insulance	>20M	Waterproof Level	IPX4
Load Parameter			
Load	Rated Voltage	Rated Frequency	Rated Power
Steam Generator	AC230V	50/60Hz	2.8KW
Color-changing Light	DC12V		5W
Dimensions			
Keyboard	Length*Width*High		Unit : mm
Electric Box	Length*Width	205*140	Unit : mm
Ceiling Light	Length*Width*High		Unit : mm

Remarks:

1. The waterless protection of steam generator is adopted by water level sensor.
2. The over-heater protection of steam generator is adopted by ceramic temperature sensor.
3. Difference steam generators have different rated current and rated power.
4. Without the permission of our technical department, please don't enlarge the load power.
5. This product follows national standard 《Safety of Household and similar electrical appliances